

Two of Minneapolis' Great Sights . . .
 The Wild Flower Garden
 and
 The Northwest's Great Store

The Dayton Company

J. S. F. Plant
*Wild Flower
 Garden*

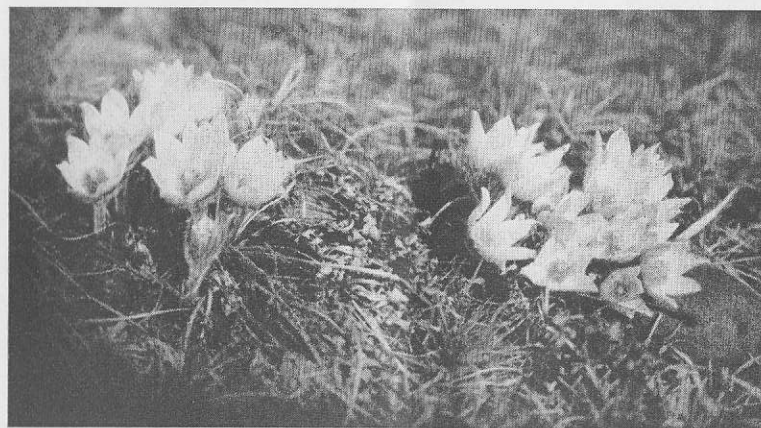
THEODORE WIRTH PARK

BOARD OF PARK COMMISSIONERS

MINNEAPOLIS, MINN.

CHAS. E. DOELL Superintendent
 GREGORY J. LUCKING Horticulturist
 MARTHA E. CRONE Curator

Self Conducted Tour



*Pasque Flowers (Anemone patens var. wolfgangiana) at the
 Eloise Butler Wild Flower Garden in Theodore Wirth Park*

The tour begins in the lower garden at the office building. Follow the trail to the right of the building which is the south trail. Here will be found various Ferns, Trilliums, Violets, Dutchman's Breeches, and Blue Phlox.

Violet Path

Turn to the left at the marker "Violet Path." Along this trail in season will be found many species of Violets, Mayapples, various Trilliums, four species of Lady's-Slipper, Baneberry, False Solomon's Seal, Spring Beauty, Ostrich Fern and Rusty Woodsia. Azaleas and Rhododendrons flourish in this sheltered area.

West Path

Follow Violet Path to the marker "West Path." Turn to the right, and leisurely stroll along this trail where many interesting plants will be found. In the early spring there is the delightful Hepatica display where hundreds of plants form a tapestry of color in various shades of blue, purple, pink, and white. They are followed by the Large-flowered Trillium, Yellow Trillium, Shooting Star, Blue Cohosh, Blue Phlox, Bloodroot, Foam Flower, Crested Iris, Wild Geranium, Lady Fern, Silvery Spleenwort, etc. Continue on this trail past the massive White Elm, Ohio Buck-eye, Black Walnut, and Butternut trees.

To The Bog

On arriving at the marker "To Bog" turn to the right and along this winding foot path will be found many spring flowers such as Wild Ginger, False Rue Anemone, Pepper-root, Golden Seal, Meadow Rue, and others.

Foot-Bridge

Progress to the wooden foot-bridge where on the right side Skunk Cabbage blooms when the ice and snow are barely gone. Here also is Brookline, Arrow-head, Meadow Queen, and Cow Parsnip. On the

left hand side of the bridge is a pool fed by several springs and held back by a dam across the outlet. Here in shallow water is a fine display of Wild Calla Lily, Forget-me-not, Buckbean and Water Avenas. Along the shore is an attractive planting of Red Turtle-head and Obedient Plant, both blooming in the fall.

Side Trails

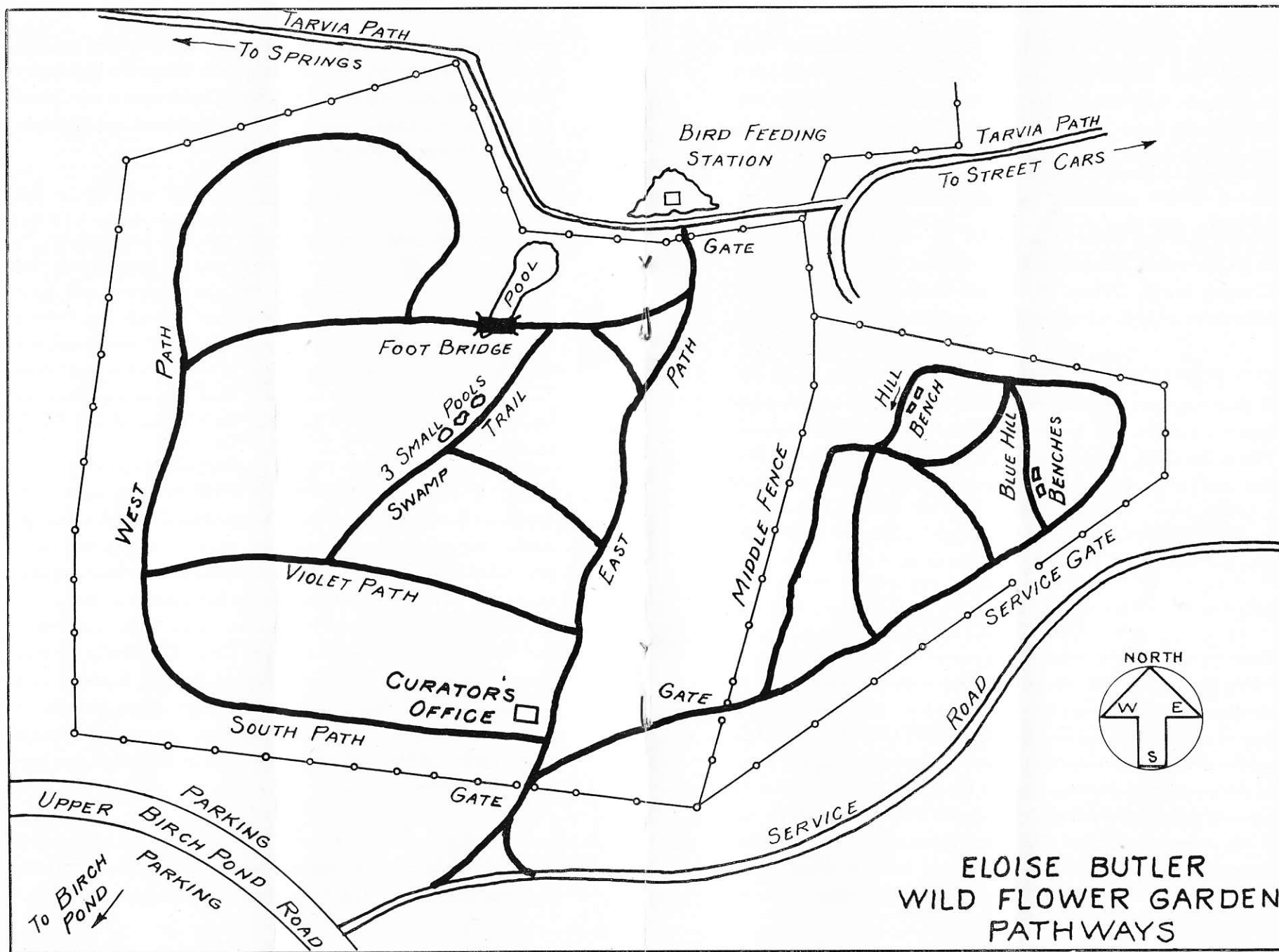
After continuing across the foot-bridge, side trails may be taken. To the left a trail leads to the north gate. Beyond the gate a tarvia trail leads west to the large springs. To the east a winding trail leads to the picnic grounds, shelter, bath house and streetcar line. Retrace steps to the side trails. Here is a ground cover of Yellow Violets and Canada Violets blooming in the spring, as well as Yellow and White Trout Lily and the very rare Minnesota Trout Lily, also quantities of Mertensia, Great Solomon's Seal, Blue Phlox, Bloodroot and Spring Beauty.

The Bog Garden

Return to the beginning of Swamp Trail. This corduroy trail leads through the center of a wet peat bog. Three small pools have been established along the west side of the trail to accommodate aquatic plants. The first pool is given over to the lovely American Lotus Lily, the second has Pickerel-weed in the more shallow water, with Yellow and White Water Lilies in the deeper water. The slightly elevated shorelines contain the very elusive Fringed Gentian, Purple Fringed Orchids, Green Orchids, Showy Lady's-Slipper, Grass Pink, Sweet Flag, Yellow and Blue Iris, and Cardinal Flower. The meadow adjacent to the pools is golden with Marsh Marigolds in the spring, and here also is found Swamp Saxifrage.

Fork In Swamp Path

Just beyond the pools the trail divides, one leading back to Violet Path, the other to East Path. The former leads through a wet wooded



area where abound Cinnamon Fern, Goldie's, and Maidenhair Fern, Bishop's Cap, Foam Flower, Yellow Trillium, Bunch-berry, Blueberry and Canada Yew. The trail leading to the east path is fringed with plantings of Royal Fern, Gold-thread, Creeping Dalibarda, Twin Flower, and various Asters.

East Path

On East Path turn to the left and follow the winding trail which ends at the north gate. Along the trail will be found Creeping Loosestrife, Creeping Myrtle, Trilliums, Asters, and Golden-rods. Return to the office.

South Path

A short trail from the office toward the west is bordered with many interesting plants, such as Rue Anemone; Putty-root; Snow, Painted, Purple, Rose and Large-flowered Trilliums; Clintonia; Bellwort; Fire Pink; and Turk's-cap Lily. A luxuriant growth of Interrupted Fern covers a hillside. Here also are interesting trees and shrubs, Leatherwood, Dogwood, Bladdernut, Mountain and Stripped Maple, Ironwood, Oaks, Elms and Paper Birch. Return again to the office.

Upland Garden

From the office, south, at the top of a small hill, turn to the left and follow the winding trails through this prairie garden which is still in development stage, having been established in 1944. From the summits of several hills a fine view may be had of a busy Metropolis. This garden overlooks the lower garden and is fully 75 feet higher. Some of the outstanding plantings here are the Pasque-flowers, the first to bloom in the spring. A hillside of Blue Lupine is later taken over by the vividly colored Red Rocket. Bird's-foot Violets carpet a hillside. The Large-flowered Penstemon takes over here later on. Honeysuckle covers a portion of the fence. Five species of Blazing Star bloom at

various times. Also along the trails will be found Partridge Pea, Bottle and White Gentian, Coreopsis, Black-eyed Susans, Sweet Ox-eye, and many Asters and Golden-rods.

Rare Flowers

Some of the rare and unusual flowers well established in the Upland Garden are—Montana Bitter root, Wild Poinsettia, Western Penstemon, Western Evening Primrose, Yellow Indigo, False Fragrant Indigo, various Cacti Prairie Talinum, Prairie Downy Gentian, Primula, and Bluets.

A complete list of plants growing in the garden may be obtained at the Curator's office.

This bit of wilderness (13 acres in extent) is well worth visiting, where the beauty of Nature's touch is everywhere.

How To Reach The Garden

By walking west one block from the end of the Glenwood Streetcar line, then turning to the left and following the tarvia trail south to the spring, and turning right for about 100 feet to entrance gate. In driving, it is located half way between Glenwood Avenue and Wayzata Boulevard, over the hill from Birch Pond.

The garden is open from April 1 to November 1.

Hours

9:00 a.m. to 5:00 p.m.—Monday through Saturday

10:00 a.m. to 5:00 p.m.—Sundays

Mrs. Martha E. Crone, Curator of the Garden

Thousands of people are enjoying the facilities of the Wild Flower Garden every year. The value of the work being done in this garden cannot be too strongly stressed.

This natural heritage is worthy of perpetual preservation for the generations to follow.

Help us to grow and prosper by becoming a member of "Friends of the Wild Flower Garden," Inc., an organization of public spirited citizens for the furtherance of making the garden an outstanding institution.

The official publication of this group is called "The Fringed Gentian", issued quarterly and is included with membership.



APPLICATION FOR MEMBERSHIP

Friends of the Wild Flower Garden, Inc.

(a non-profit corporation)

Sponsoring

Minneapolis Park Board's Municipal Wild Flower Garden
in Theodore Wirth Park

I desire to become a member of the above society

I enclose \$ _____

Name _____

Address _____

Annual Membership Fees

| | |
|------------|----------|
| Benefactor | \$500.00 |
| Founder | 200.00 |
| Builder | 100.00 |
| Sponsor | 25.00 |
| Sustainer | 10.00 |
| Active | 3.00 |

Make remittance payable to:

Friends of the Wild Flower Garden, Inc.
2318 Chestnut Ave.
Minneapolis 5, Minn.



For further information write to:

Mrs. Martha E. Crone
3723 Lyndale Ave. No.
Minneapolis 12, Minn.